



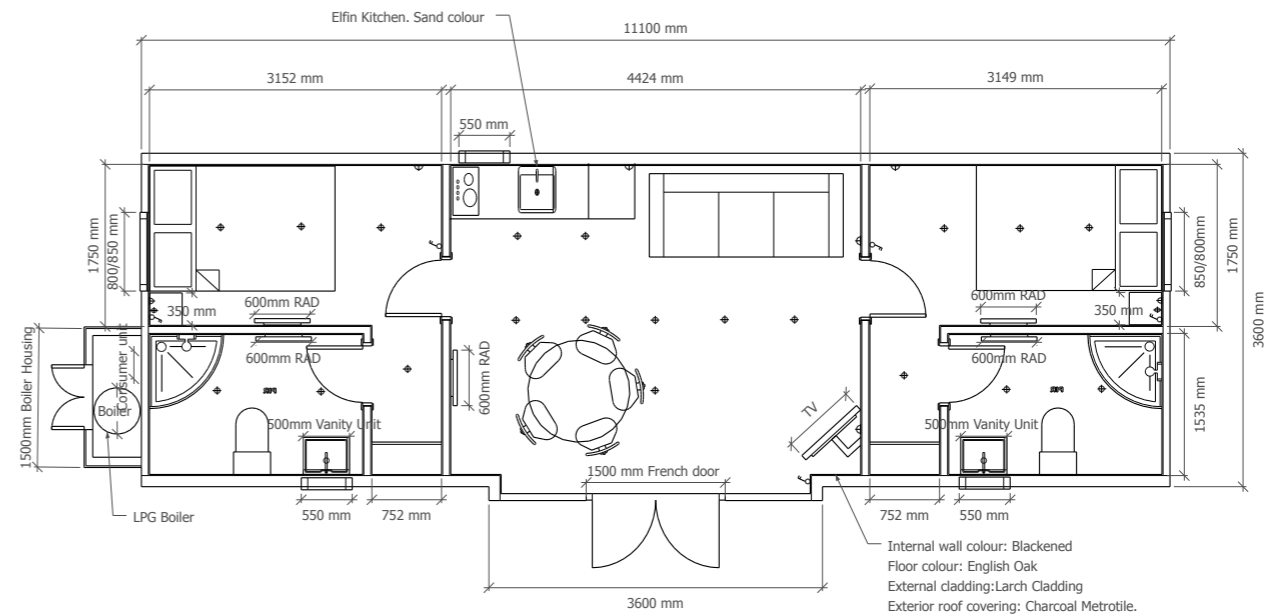
PodFactory

Accomodation units

Quotation valid for 30 days

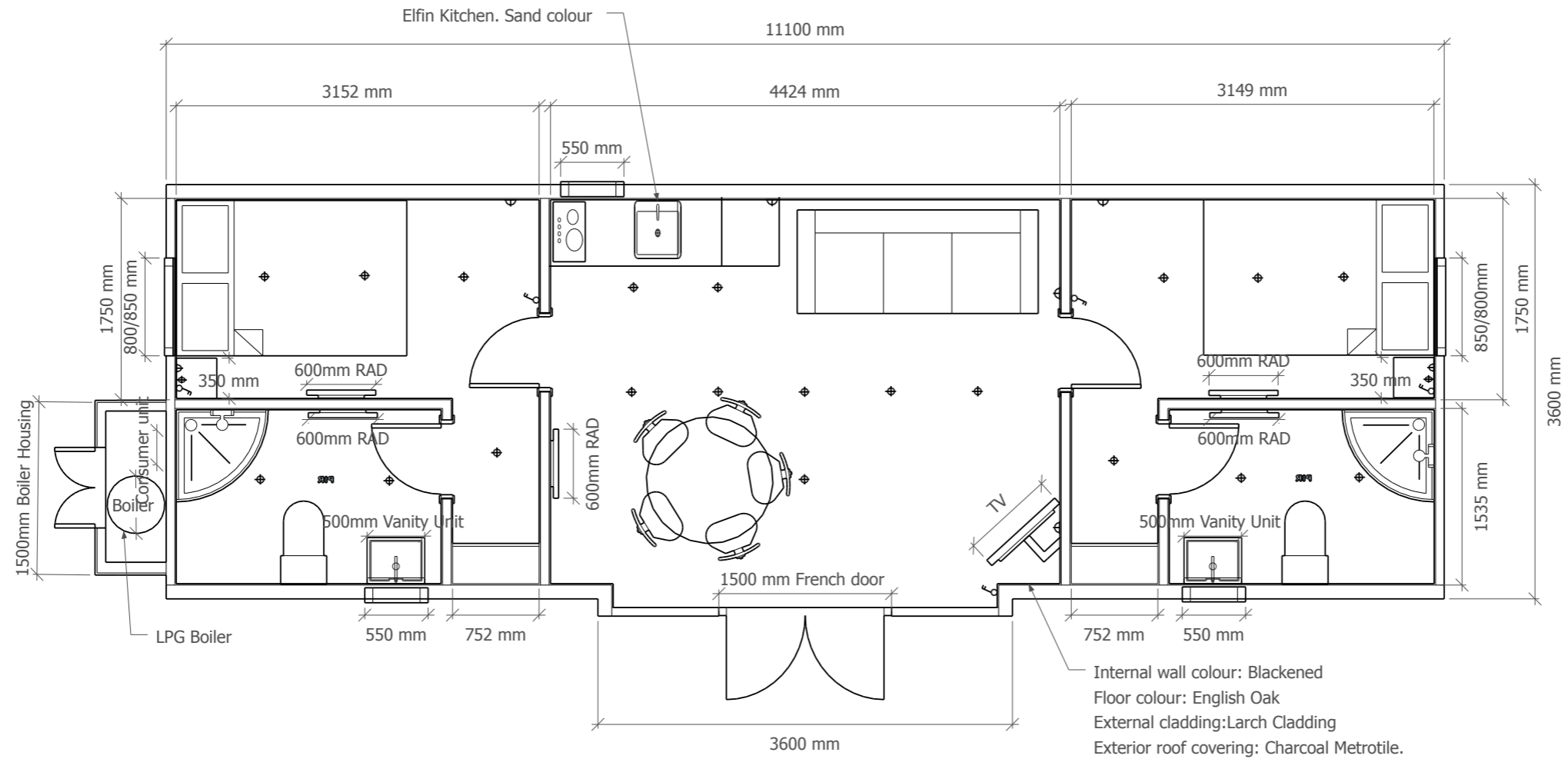
Glamping pod specification 11/3.8m Pod

Construction Spec	Info
Walls	120mm laminated frame with 100mm insulation
Roof	120mm laminated frame with 100mm insulation
Floor	120mm laminated frame with 100mm insulation
External specification	
Chassis spec	Heavy duty chassis. Large 200/100/5mm Main members with 125/60mm Outriggers.
External cladding	-Larch cladding machined end wall cladding with hidden fixings. 18/125mm
External Roof covering	-Metrotile exterior. Colour TBC
Internal Specification	
Kitchen	High quality elfin kitchen. 1500mm With oven, fridge, oven and storage. Oak worktop
Bathrooms	1 x 800mm quadrant shower x 2, bespoke vanity unit, standard toilet.
Internal boards	MDF internal cladding. V groove cladding 125/12mm
Internal flooring	LVL flooring (colour TBC)
Windows and doors	UPVC Windows and doors. 1 x large panoramic frontage, 1 x 850,850mm, 2 x 550/780mm Fakro window, 1 x 1180/780mm Fakro Window.
Internal doors	Holdenby Oak internal doors. Finished with OSMO treatment.
Electrical	
Electrical	All electrics installed to 18th edition.
Sockets and switches	Brushed stainless switches and sockets with USB by the beds.
Lighting	All internal lighting warm white spot lights and external LED lighting.
Plumbing	
Plumbing	All plumbing installed and tested by gas safe engineer. All heat loss calculations will be supplied. All pipe work to be N pressed fittings.
Base Price:	£44,500.00
Kitchen upgrade	£1,750.00
Wheeled Chassis	£550.00
LPG	£850.00
Painted interior	£750.00
Total price	£48,400.00
Furniture	TBC
Delivery estimate:	£1,450.00



***Price excludes the base and the connections on site, Payments are 50% upfront, 50% upon completion before delivery is arranged. Sizes on the plan may vary slightly during the build. Delivery requires Telehandler for the unloading and moving of the buildings. Furniture excluded**

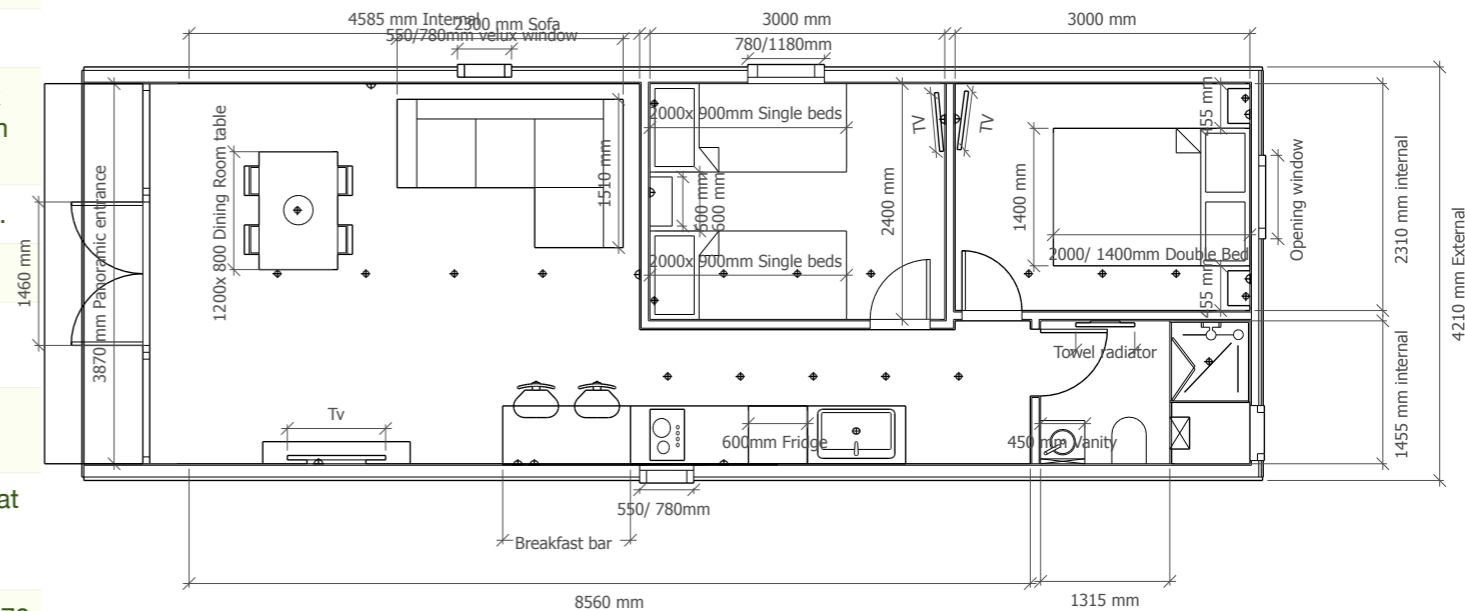
Glamping pod layout 11/3.8m



Example layout, layout and sizes may vary depending on Pod and spec *

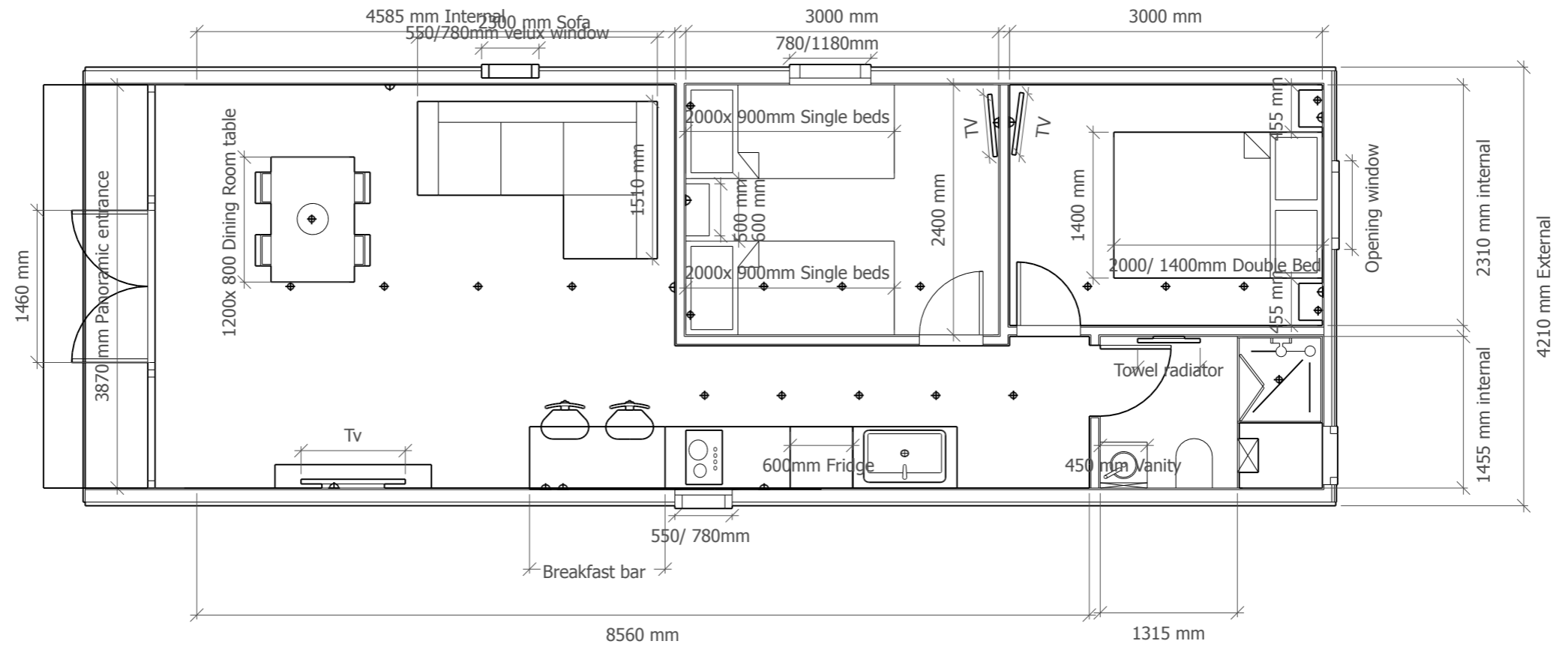
Glamping pod specification 12/4.2m Pod

Construction Spec	Info
Walls	120mm laminated frame with 100mm insulation
Roof	120mm laminated frame with 100mm insulation
Floor	120mm laminated frame with 100mm insulation
External specification	
Chassis spec	Heavy duty chassis. Large 200/100/5mm Main members with 125/60mm Outriggers.
External cladding	-Larch cladding machined end wall cladding with hidden fixings. 18/125mm
External Roof covering	-Metrotile exterior. Colour TBC
Internal Specification	
Kitchen	High quality elfin kitchen. 1500mm With oven, fridge, oven and storage. Oak worktop
Bathrooms	1 x 800mm quadrant shower, bespoke vanity unit, standard toilet.
Internal boards	MDF internal cladding. V groove cladding 125/12mm
Internal flooring	LVL flooring (colour TBC)
Windows and doors	UPVC Windows and doors. 1 x large panoramic frontage, 1 x 850,850mm, 2 x 550/780mm Fakro window, 1 x 1180/780mm Fakro Window.
Internal doors	Holdenby Oak internal doors. Finished with OSMO treatment.
Electrical	All electrics installed to 18th edition.
Sockets and switches	Brushed stainless switches and sockets with USB by the beds.
Lighting	All internal lighting warm white spot lights and external LED lighting.
Plumbing	All plumbing installed and tested by gas safe engineer. All heat loss calculations will be supplied. All pipe work to be N pressed fittings.
Base Price:	£49,170
Kitchen upgrade	£1,750
Wheeled Chassis	£550.00
LPG	£850.00
Painted interior	£750.00
Total price	£53,070
Furniture	TBC
Delivery estimate:	£1,450.00



***Price excludes the base and the connections on site, Payments are 50% upfront, 50% upon completion before delivery is arranged. Sizes on the plan may vary slightly during the build. Delivery requires Telehandler for the unloading and moving of the buildings. Furniture excluded**

Glamping pod layout 12/4.2m Straight Tunnel



Example layout, layout and sizes may vary depending on Pod and spec *



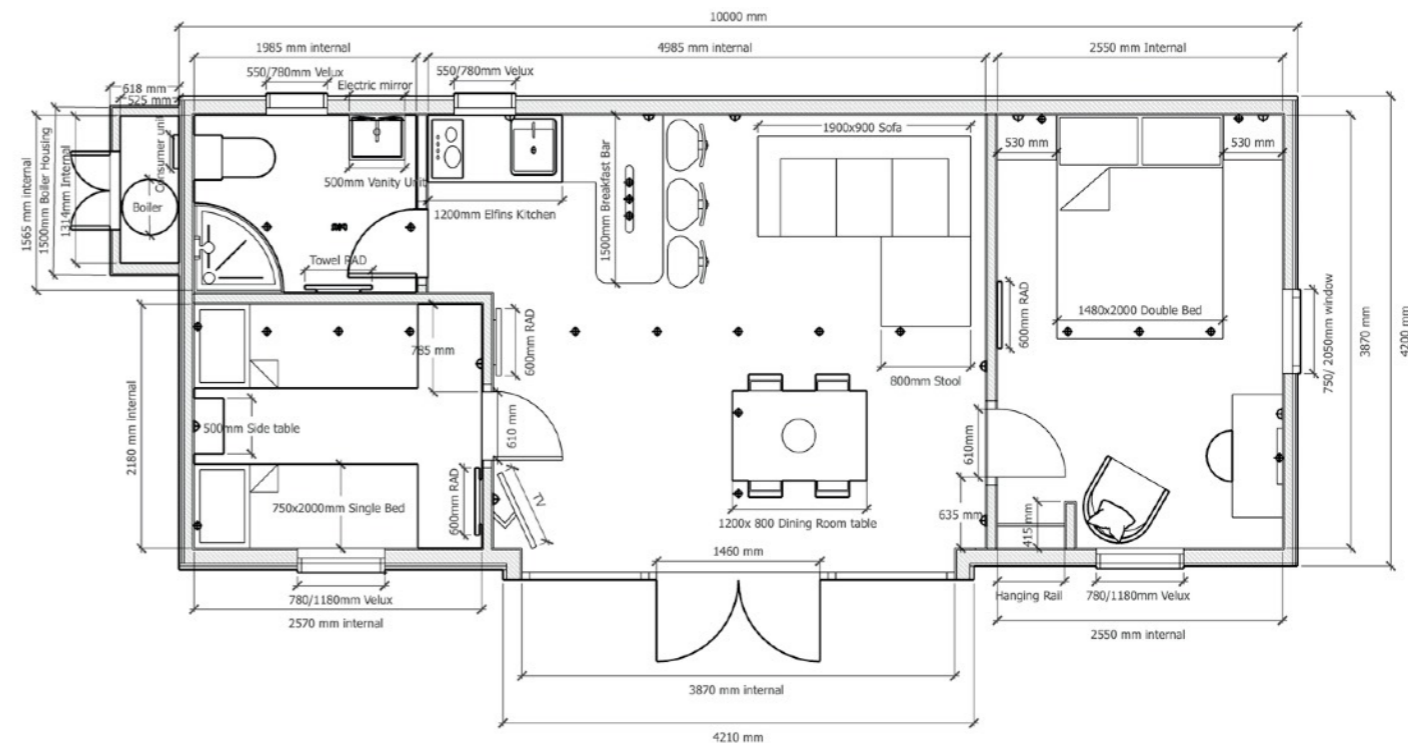
PodFactory

12/4.2m

Quotation valid for 30 days

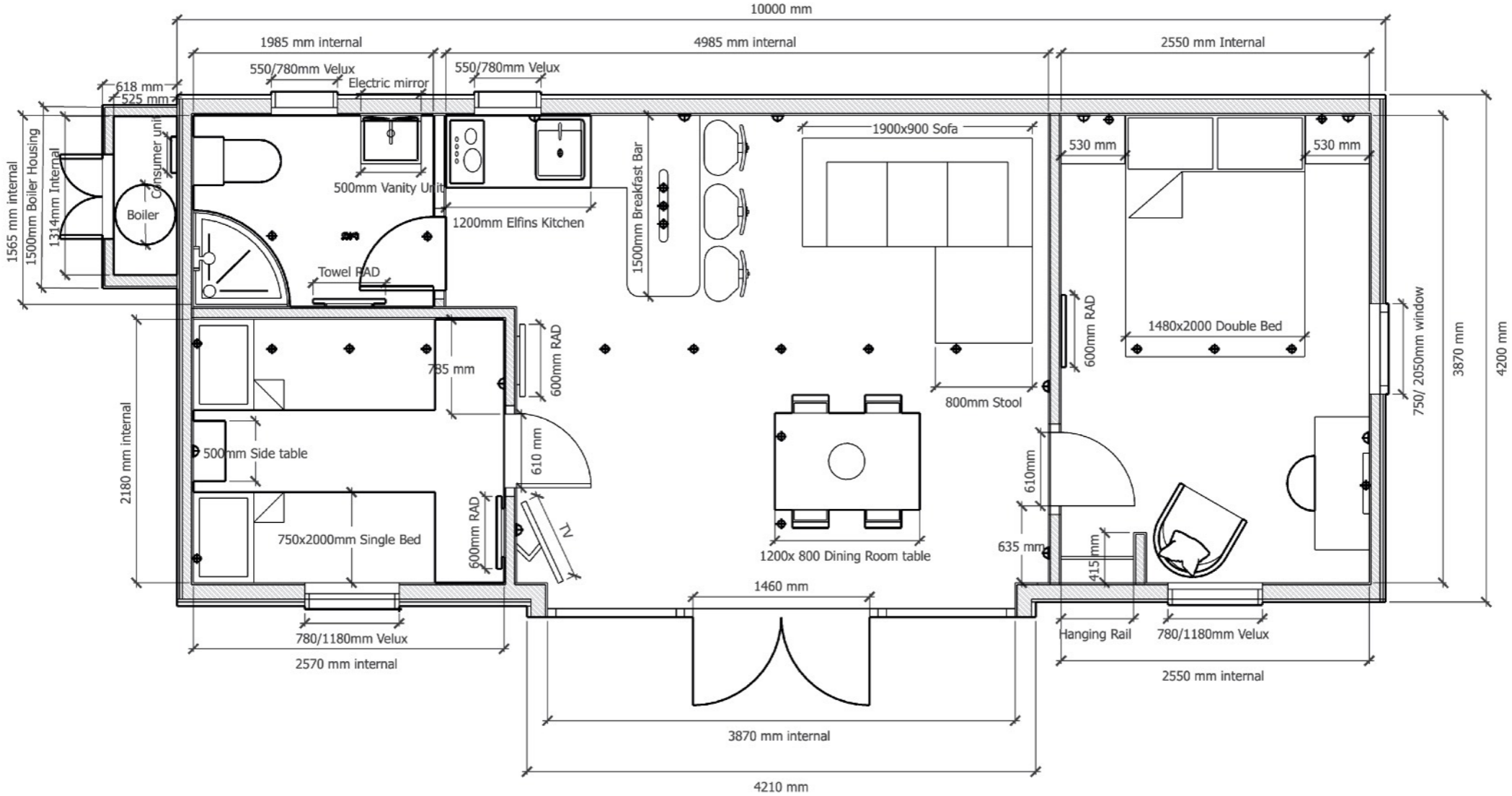
Glamping pod specification 9.6m Pod

Construction Spec	Info
Walls	120mm laminated frame with 100mm insulation
Roof	120mm laminated frame with 100mm insulation
Floor	120mm laminated frame with 100mm insulation
External specification	
Chassis spec	Heavy duty chassis. Large 200/100/5mm Main members with 125/60mm Outriggers.
External cladding	-Larch cladding machined end wall cladding with hidden fixings. 18/125mm
External Roof covering	-Metrotile exterior. Colour TBC
Internal Specification	
Kitchen	High quality elfin kitchen. 1500mm With oven, fridge, oven and storage. Oak worktop
Bathrooms	1 x 800mm quadrant shower, bespoke vanity unit, standard toilet.
Internal boards	MDF internal cladding. V groove cladding 125/12mm
Internal flooring	LVL flooring (colour TBC)
Windows and doors	UPVC Windows and doors. 1 x large panoramic frontage, 1 x 750/2050mm, 2 x 550/780mm Fakro window, 2 x 1180/780mm Fakro Window.
Internal doors	Holdenby Oak internal doors. Finished with OSMO treatment.
Electrical	
Electrical	All electrics installed to 18th edition.
Sockets and switches	Brushed stainless switches and sockets with USB by the beds.
Lighting	All internal lighting warm white spot lights and external LED lighting.
Plumbing	
Plumbing	All plumbing installed and tested by gas safe engineer. All heat loss calculations will be supplied. All pipe work to be N pressed fittings.
Base Price:	£47,100
Kitchen upgrade	£1,750
Wheeled Chassis	£550.00
LPG	£850.00
Painted interior	£750.00
Total price	£53,000
Furniture	TBC
Delivery estimate:	£1,450.00



***Price excludes the base and the connections on site, Payments are 50% upfront, 50% upon completion before delivery is arranged. Sizes on the plan may vary slightly during the build. Delivery requires Telehandler for the unloading and moving of the buildings. Furniture excluded**

Glamping pod layout 9.6/4.2m Side entry



Example layout, layout and sizes may vary depending on Pod and spec *



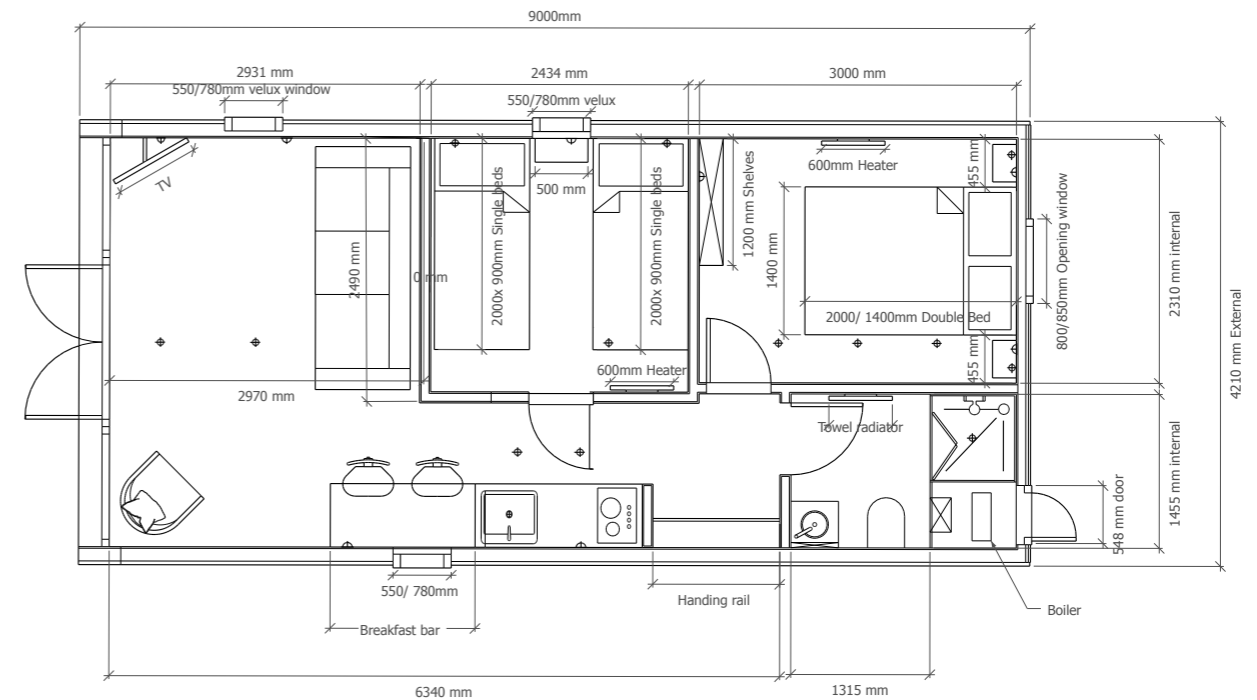
PodFactory

9.6/4.2m

Quotation valid for 30 days

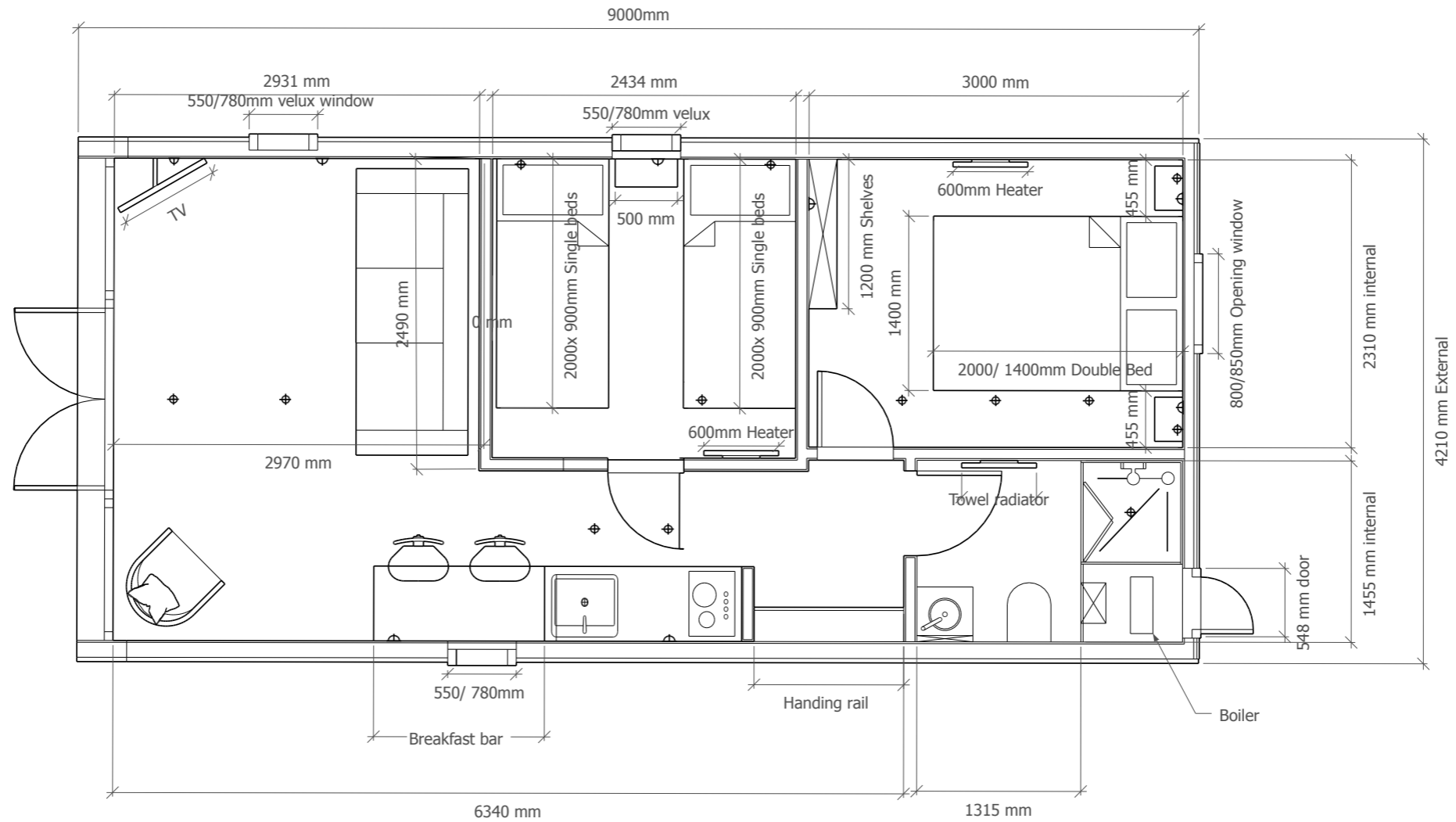
Glamping pod specification 9/4.2m Pod

Construction Spec	Info
Walls	120mm laminated frame with 100mm insulation
Roof	120mm laminated frame with 100mm insulation
Floor	120mm laminated frame with 100mm insulation
External specification	
Chassis spec	Heavy duty chassis. Large 200/100/5mm Main members with 125/60mm Outriggers.
External cladding	-Larch cladding machined end wall cladding with hidden fixings. 18/125mm
External Roof covering	-Metrotile exterior. Colour TBC
Internal Specification	
Kitchen	High quality elfin kitchen. 1500mm With oven, fridge, oven and storage. Oak worktop
Bathrooms	1 x 800mm quadrant shower, bespoke vanity unit, standard toilet.
Internal boards	MDF internal cladding. V groove cladding 125/12mm
Internal flooring	LVL flooring (colour TBC)
Windows and doors	UPVC Windows and doors. 1 x large panoramic frontage, 2 x 550/780mm fakro window.
Internal doors	Holdenby Oak internal doors. Finished with OSMO treatment.
Electrical	
Electrical	All electrics installed to 18th edition.
Sockets and switches	Brushed stainless switches and sockets with USB by the beds.
Lighting	All internal lighting warm white spot lights and external LED lighting.
Plumbing	
Plumbing	All plumbing installed and tested by gas safe engineer. All heat loss calculations will be supplied. All pipe work to be N pressed fittings.
Base Price:	£39,800.00
Kitchen upgrade	£1,750
Wheeled Chassis	£550.00
LPG	£850.00
Painted interior	£750.00
Total price	£43,700.00
Furniture	TBC
Delivery estimate:	£1,450.00



***Price excludes the base and the connections on site, Payments are 50% upfront, 50% upon completion before delivery is arranged. Sizes on the plan may vary slightly during the build. Delivery requires Telehandler for the unloading and moving of the buildings. Furniture excluded**

Glamping pod layout 9/4.2m Straight Tunnel



Example layout, layout and sizes may vary depending on Pod and spec *



PodFactory

9/4.2m

Quotation valid for 30 days



